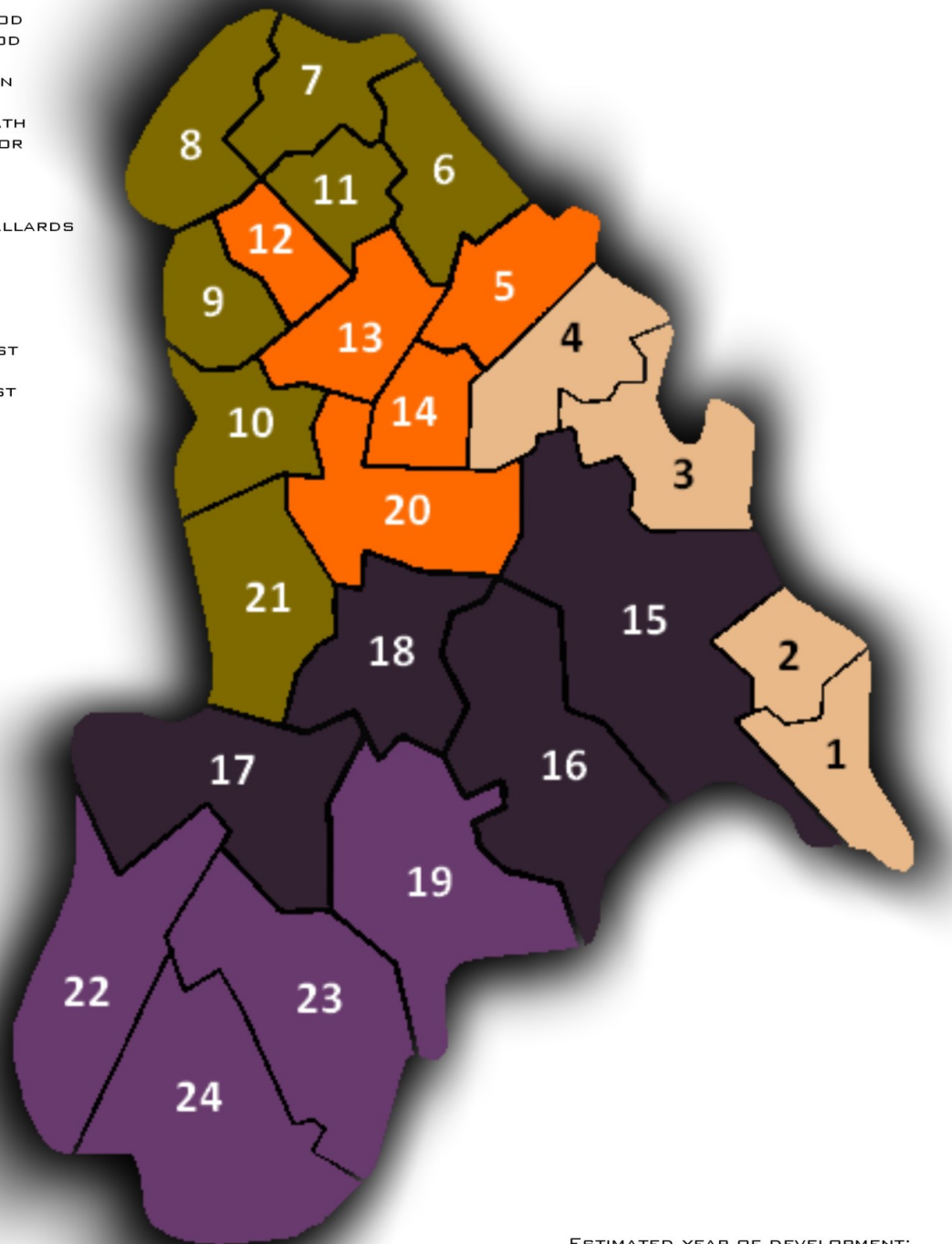


Appendix 1 (A)

Croydon

- 1 NEW ADDINGTON
- 2 FIELDWAY
- 3 SHIRLEY
- 4 ASHBURTON
- 5 WOODSIDE
- 6 SOUTH NORWOOD
- 7 UPPER NORWOOD
- 8 NORBURY
- 9 WEST THORNTON
- 10 BROAD GREEN
- 11 THORNTON HEATH
- 12 BENSHAM MANOR
- 13 SELHURST
- 14 ADDISCOMBE
- 15 HEATHFIELD
- 16 SELSDON & BALLARDS
- 17 PURLEY
- 18 CROHAM
- 19 SANDERSTEAD
- 20 FAIRFIELD
- 21 WADDON
- 22 COULSDON WEST
- 23 KENLEY
- 24 COULSDON EAST



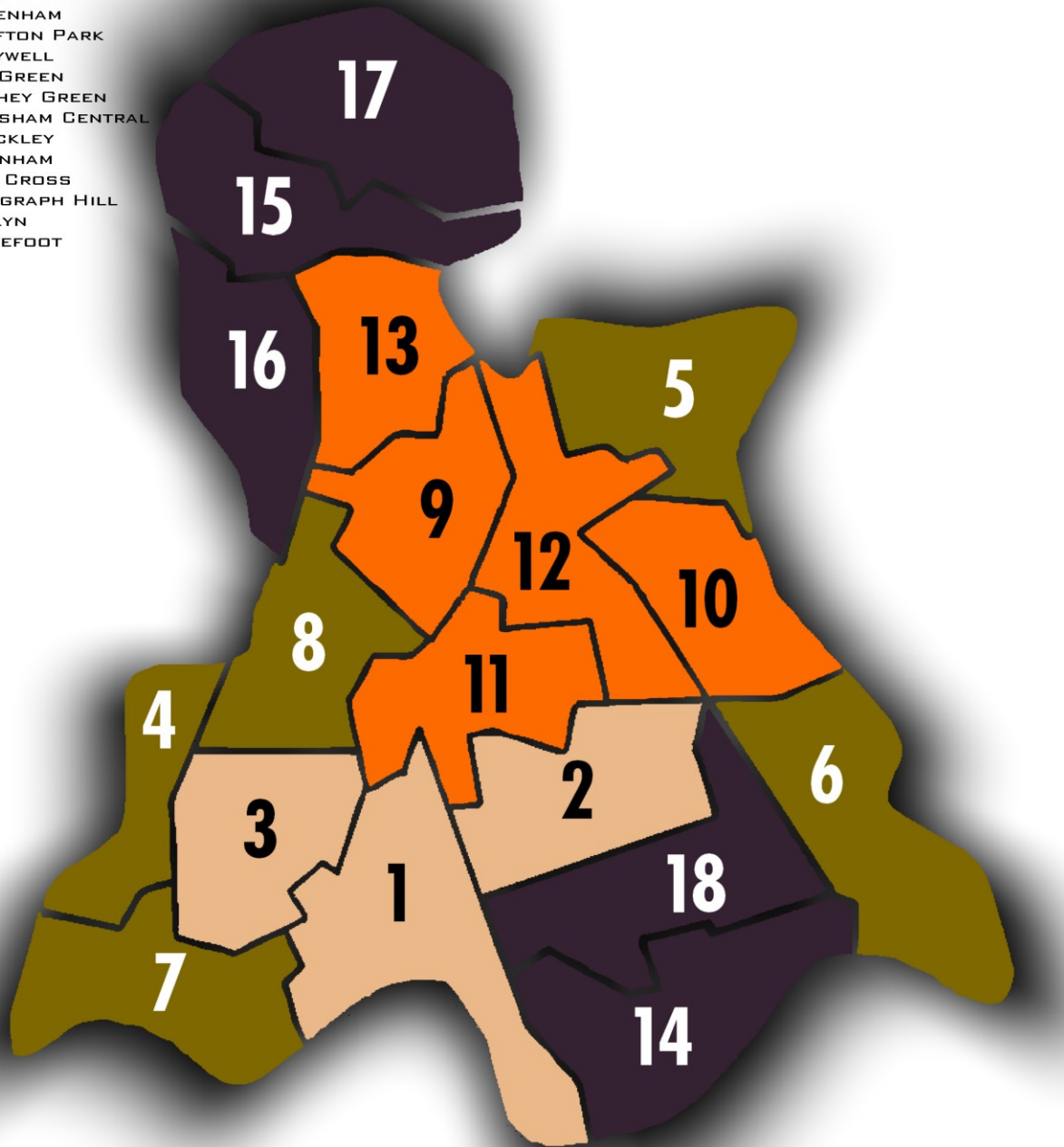
ESTIMATED YEAR OF DEVELOPMENT:

- YEAR 1
- YEAR 2
- YEAR 3
- YEAR 4
- YEAR 5

Appendix 1 (B)

Lewisham

- 1 BELLINGHAM
- 2 CATFORD SOUTH
- 3 PERRY VALE
- 4 FOREST HILL
- 5 BLACKHEATH
- 6 GROVE PARK
- 7 SYDENHAM
- 8 GROFTON PARK
- 9 LADYWELL
- 10 LEE GREEN
- 11 RUSHEY GREEN
- 12 LEWISHAM CENTRAL
- 13 BROCKLEY
- 14 DOWNHAM
- 15 NEW CROSS
- 16 TELEGRAPH HILL
- 17 EVELYN
- 18 WHITEFOOT



ESTIMATED YEAR OF DEVELOPMENT:

- YEAR 1
- YEAR 2
- YEAR 3
- YEAR 4

Appendix 2 Lewisham Tree Issues

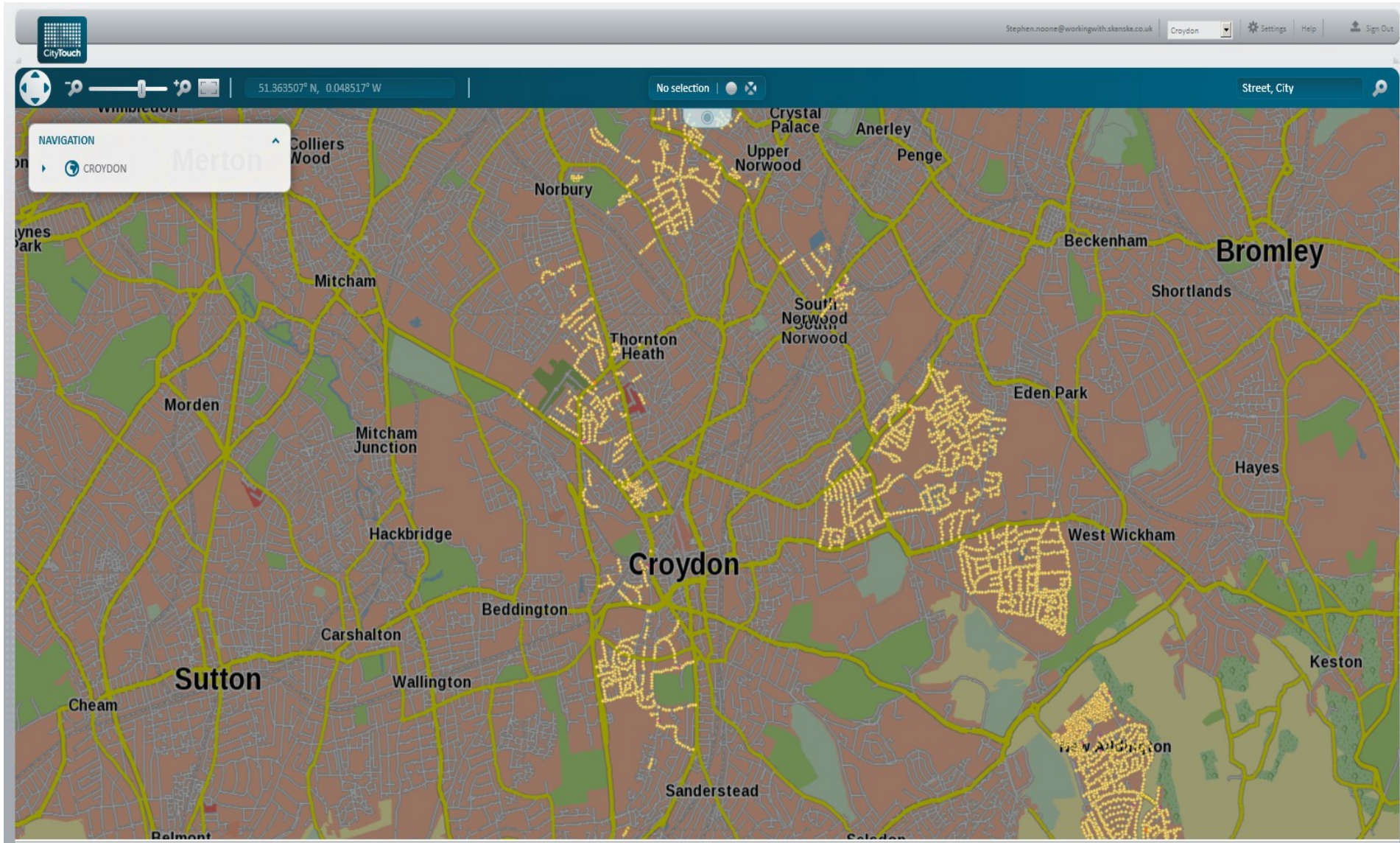
CROYDON AND LEWISHAM STREET LIGHTING PFI										
01/02/13 - Site Survey of Lewisham Streets identified as having tree issues. Present on site Paul Burman,										
Road Name	Column No	Tree Ownership	Solution	Skanska Comment	Authority Team Comment From Site Visits with Skanska and Jacobs.	Authority & Skanska Site Visit on 18th July 2013	IR	MHC		
Adamsrill Road	002	Authority Tree	Tree Trim		TBA Issues with trees and light output - site visit required to verify Skanska Comments	Relocate column to opposite side of the road	yes	On boundary of 5/7		
	003	Authority Tree	Tree Trim			Move column to front of path 1m to right	I have to left with right crossed out!	Move 2m to right at front of path		
	007	Authority Tree	Tree Trim			Move 2m to right?	yes	Move 2m to right and trim.		
	011	Authority Tree	Tree Trim/To Move			Cut Tree on both sides of light	yes	Trim Tree		
De Frene Road	001	Authority Tree	Tree Trim	Tree Located in school premises	TBA Tree issue light output affected, SS to look at options.	Tree Trim	yes	Tree trim		
	008				TBA Tree issue light output affected, SS to look at options.	OK Leave in current location	yes	No issue		
Dacres Road	003	Private Tree	Tree Trim		TBA Column location still to be surveyed.	Tree Trim	yes	Tree trim		
	004	Private Tree	Tree Trim		TBA Column location still to be surveyed.	Tree Trim	yes	Tree trim		
	005	Private Tree	Tree Trim		TBA Column location still to be surveyed.	Tree Trim	yes	Tree trim		
	010	Authority Tree	Tree Trim		TBA Possible tree issue - SS to look at options with optic settings.	Tree Trim	yes	Tree trim		
	011	Private Tree	Tree Trim		Agreed					
	012				Not Agreed Issue with where this column has been installed it moving to rear of footway as per design. Its current location is poor and does not meet DDA requirements.	New Calculation needed for current location as installed in street	need to move Skanska to provide calc	New Calculation required column not at rear of footway		
	014	Authority Tree	To Move	Move across the road outside 1-16 Homefield House New Location within design spacing	Agreed Tree issue light output affected, move to opposite side of road.					
	021	Authority Tree	To Move	Move across the road outside forest Hill School New Location within design spacing	Agreed Tree issue light output affected, move to opposite side of road.					
	022	Authority Tree	To Move	Move across the road outside forest Hill School New Location within design spacing	Agreed Tree issue light output affected, move to opposite side of road.					
	023	Authority Tree	To Move	Move across the road outside forest Hill School New Location within design spacing	Agreed Tree issue light output affected, move to opposite side of road.					
	Bampton Road	003	Authority Tree	To Move	Move to Front of Path New Calculation available to show compliance of the new setback (800mm from front of kerb) with required lighting levels	TBA	Move to front of path and tree trim	yes	Move to front of path and tree trim	
		005						On site was agreed to trim branches	Column 5 tree trim - note branches bigger than 20mm so SKUK need to employ a third party to do the work.	
006		Authority Tree	To Move	Move across the road and Front of Path outside no. 69 New Calculation available to show compliance of the new setback (800mm from front of kerb) with required lighting levels	TBA	Move as described	yes			
007		Private Tree	Tree Trim		TBA	Already done - Leave	yes	No issue		
008		Private Tree	Tree Trim		TBA	Cut Tree Branch to resolve	yes	Tree trim		
010		Authority Tree	To Move	Move across the road by gable end of no. 53 and Back of Path New Location within design spacing	TBA	Move as described	yes	Move as described		
012		Authority Tree	Tree Trim		TBA	Tree Trim	yes	Tree Trim		
Inglemere Road	002	Authority Tree	To Move	Move across the road to border of no 8 and Oakdene Hse. New Location within design spacing	Agreed					
	006	Authority Tree	To Move	Move to Front of Path New Calculation available to show compliance of the new setback (600mm from front of kerb) with required lighting levels	Agreed					

Silverdale	002	Private Tree	Tree Trim		Not Agreed Tree issue light output affected, agreed to move column along footpath to gable end same side.	Tree Trim - Relocate Railway station sign to column and remove stright post	yes	Tree trim, move sign new bracket
	006	Authority Tree	To Move	Move column about 3m to east of current location. New Location within design spacing	TBA Tree issue light output affected, Seki to look at options for moving.	Move column to opposite side of the road outside of 39 Silverdale	check calcs aim to move opposite side of road 31-133 Silverdale	Move to opp side of road c/o 31/133 Silverdale
	008				TBA Tree issue light output affected, Seki to look at options for moving.	Move 3m to mid point between trees	yes	Move along towards 007
	009	Private Tree	To Move	Move across the road by side of 1 Recreation Road. New Location within design spacing	Agreed Tree issue light output affected, agreed to move column to opposite side of road.			
	013	Private Tree	To Move	Move to front of path New Calculation available to show compliance of the new setback (600mm from front of kerb) with required lighting levels	TBA Tree issue light output severley affected. Discussed options and possible solution to move column onto island opposite and merge with proposed column 014 to create a twin arm. Seki to carryout lighting calcaultions and report back.	Move to front of path near to brick built flower bed	yes, will need to clarify, which flower bed!	Move to old position and check calculation
	014	Private Tree	Tree Trim		Not Agreed Tree issue light output severley affected. Discussed options and possible solution to move column onto island opposite and merge with proposed column 013. Seki to carryout lighting calcaultions and report back.	Tree Trim	yes	This one is ok the tree is dead.
Pearfield Road	002	Authority Tree	To Move	Move across the road opposite no. 6 New Location within design spacing	Agreed Tree issue light output affected, SS to look at installing on opposite side of road between BT or move to boundary of 4/6.			
Houston Road	009	Authority Tree	To Move	Move across the road by gable end of no.18 New Location within design spacing	Agreed Agreed to move to opposite side of the road between on the gable of 16/18.			
Church Vale	002	Authority Tree	Tree Trim		Not Agreed Tree issue light output affected, agreed to move column to opposite side of road - Seki to look at calculations for location.	Tree Trim	yes	Tree trim
	004	Authority Tree	Tree Trim	Tree located in school premises	Not Agreed Tree issue light output affected, agreed to move to opposite side of road.	Tree Trim	yes	Tree trim
Church Rise	001	Authority Tree	Remove Column	Column to be removed from the scheme	Agreed This column can be removed from scheme.	Redesign plan requested	yes	Redesign
	002	Authority Tree	To Move	Move to current SP1 Location, side of 16 Waldram Park Road. Change column no. to 001 New Location within design spacing	Agreed Tree issue light output affected, move to opposite side of the road to the location of the free standing sign and transfer signs onto column – remove sign post.	Redesign plan requested	yes	Redesign
	003	Authority Tree	To Move	Move 6m towards Waldram Park Road, outside no.2. Change column no. to 002 New Location within design spacing	Agreed Tree issue light output affected, move along road to gable end of Beaumont No. 2.	Redesign plan requested	yes	Redesign
	004	Authority Tree	Tree Trim	Change column no. to 003	Not Agreed Tree issue light output affected, move column so its mid point between the two trees.	Redesign plan requested	yes	Redesign
	005	Authority Tree	To Move	Move across the road to b/o 19c/21 Change column no. to 004	Agreed Tree issue light output affected, move to opposite side of road.	Redesign plan requested	yes	Redesign
	008				Not Agreed This will be moved to opposite side of road where the old column was installed.	Redesign plan requested	yes	Redesign
	009	Authority Tree	Tree Trim	Change column no. to 008	Not Agreed Tree issue light output affected, this column will be moved 54.5m from column 010.	Redesign plan requested	yes	Redesign
	010	Authority Tree	Tree Trim	Change column no. to 009	Not Agreed Tree issue light output affected, this column will be moved 42m from column 012 on property divide and away from tree.	Redesign plan requested	yes	Redesign
	011	Authority Tree	Tree Trim	Change column no. to 010	Not Agreed This column can be removed from the scheme.	Redesign plan requested	yes	Redesign
	012	Authority Tree	Tree Trim	Change column no. to 010	Not Agreed Tree issue light output affected, this will be moved along the same side of road at front of path away from tree. Calculation required to check the levels on the junction of Westbourne and Church Rise including contribution from lighting on Perry Vale.	Redesign plan requested	yes	Redesign

Woolstone Road	004	Authority Tree	Tree Trim	Bracket to be considered New calculations incorporating brackets are available. DVA required as column spacing below required design spacing by 0.02m from col 5 and 0.9m from col 3	Not Agreed Tree issue column needs moving.	Lighting calculations using brackets required	yes	Further calculations to be provided
	005	Authority Tree	Tree Trim	Bracket to be considered New calculations incorporating brackets are available. DVA required as column spacing exceeds required design spacing by 1m	Not Agreed Tree issue column needs moving.	Lighting calculations using brackets required	yes	Further calculations to be provided
	008	Authority Tree	Tree Trim	Bracket to be considered New calculations incorporating brackets are available. DVA required as column spacing exceeds required design spacing by 4.4m from col 009	Not Agreed Tree issue column needs moving.	Lighting calculations using brackets required	yes	Further calculations to be provided
	009	Authority Tree	Tree Trim	Bracket to be considered New calculations incorporating brackets are available. DVA required as column spacing below required design spacing by 0.9m from col 010	Not Agreed Tree issue column needs moving.	Lighting calculations using brackets required	yes	Further calculations to be provided
	010	Authority Tree	Tree Trim	Bracket to be considered New calculations incorporating brackets are available. DVA required as column spacing below required design spacing by 0.9m from col 009	Not Agreed Tree issue column needs moving.	Lighting calculations using brackets required	yes	Further calculations to be provided
	011	Authority Tree	Tree Trim	Bracket to be considered New calculations incorporating brackets are available.	TBA Tree issue possible to get away with minor trimming.	Lighting calculations using brackets required	yes	Further calculations to be provided
	015	Authority Tree	Tree Trim	Bracket to be considered New calculations incorporating brackets are available. DVA required as column spacing below required design spacing by 3.6m from col 14 and 2.4 from col 016	TBA Issue with tree and trimming will be required. Unfortunately due to number of tree's this is the best location - DVR required.	Lighting calculations using brackets required	yes	Further calculations to be provided
	015	Authority Tree	Tree Trim	Bracket to be considered for the rest of the columns without tree issues for consistency New calculations incorporating brackets are available. DVA required as few columns exceed or are below required design spacing	TBA Assume this is for column 016 - If so further discussion required.	Lighting calculations using brackets required	yes	Further calculations to be provided
Lushington Road	006	Authority Tree	Tree Trim	Bracket to be considered	TBA Issues with trees and light output - site visit required to verify Skanska Comments	Move to other side of path	yes	3m towards 005 on edge of side path.
	010	Authority Tree	Tree Trim		TBA Issues with trees and light output - site visit required to verify Skanska Comments	Move 2m to the right	yes	Move to edge of parking / end of property
	011	Authority Tree	Tree Trim		TBA Issues with trees and light output - site visit required to verify Skanska Comments	Move to front of path and 2m to right	position of old column and trim	move 2m right, front of path and tree trim
Penberth Road	002	Private Tree	None	Column not impacted by tree	Not Agreed Column adjacent to a small private overhanging tree. The tree needs to have minor pruning.	Tree Trim	no note whoops	Tree trim
Penderry Rise	004	Authority Tree	To Move	Move across the road by gable end of no.39	Agreed Light output affected by tree - agreed to move column to opposite side of road.			
	008	Authority Tree	To Move	Move 6m towards the Junction , border of 97/99	Agreed Light output affected by tree - Seki to look at alternative location.			
Westbourne Drive					Informed by Jacobs and Skanska that this street was looked at last Friday and redesigned on site due to trees.			
	001				Tree issue light output affected, this will be moved to opposite side of road 800mm back. Agreed not back of path due to vehicle access to Woolstone Cafè. Install column adjacent 30mph / 20mph zone ends and street name plate.	Move column to the other side of the road	yes	Agreed to move
	002				Tree issue light output affected, this will be moved to opposite side of the road on boundary of properties 9/11.	Possible move depending on Column 1 - lighting calcs	yes	To property boundary 4, or, opposite side of the road.
	003				Tree issue light output affected, this will be moved 4.9m from current location on same side of road.	Move 4m to left	move other side of entrance	Move along same side, or, over the road.
	005				This will be moved to opposite side of road.	Move to opposite side of the road	yes	Move to opposite side of road.
	006				This will be moved to old position EX10 and front of path inline with trees for light levels and street scene.	Move to front of path and 3m to right	locate front of path mid point of trees	Agreed to move to front of footway approx 4m south
	007				This will be moved across road between two trees at front of path.	Leave in current position	yes	Leave in current position
	008				Tree issue light output affected, this will be moved to opposite side of road at front of path.	Move to front of path and 2m to left	yes	Agreed front of path on boundary 2m to the right
009					Tree issue light output affected, this will be moved to opposite side of road, rear of path.	Move to gable end of number 60 - Check column height	yes	Agreed to move to opposite side on gable

CROYDON AND LEWISHAM STREET LIGHTING PFI

Appendix 3 CMS Connected Lighting Points – Croydon



CMS Connected Lighting Points – Lewisham

